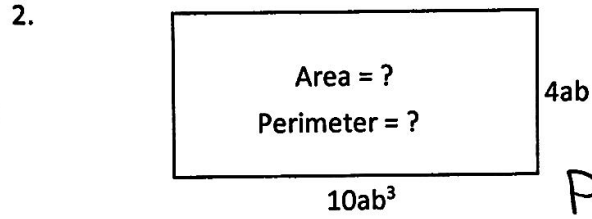
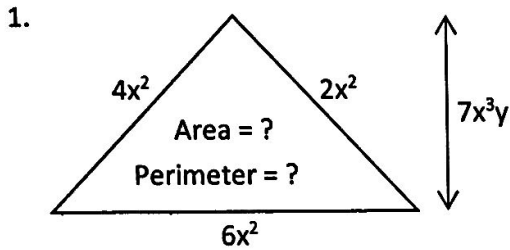


Name: \_\_\_\_\_ Period: \_\_\_\_\_

**CW/HW: Geometric Shapes with Monomials Show All Work on Separate Paper! Put Answers on WS!**

Find the area and perimeter for #1 and #2

<b>Triangle</b> $A = \frac{1}{2}bh$	<b>Trapezoid</b> $A = \frac{1}{2}h(b_1 + b_2)$	<b>Circle</b> $A = \pi r^2$	<b>Rectangle</b> $A = lw$	<b>Square</b> $A = s^2$	<b>Rectangle</b> $V = lwh$
--	---	--------------------------------	------------------------------	----------------------------	-------------------------------

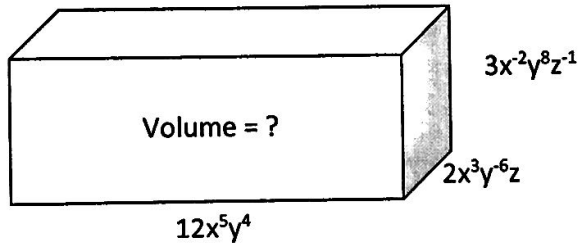


$A = 10ab^3 \cdot 4ab$   
 $A = 40a^2b^4$

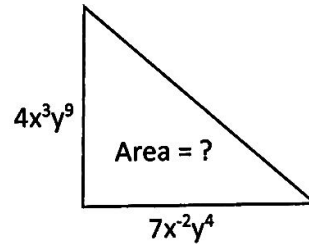
$P = 4ab + 4ab + 10ab^3 + 10ab^3$

$P = 8ab + 20ab^3$

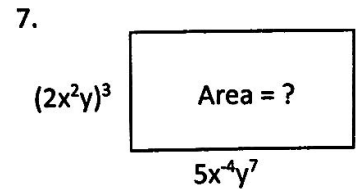
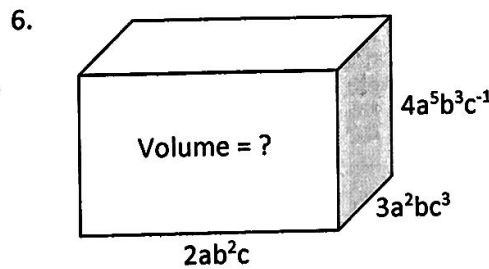
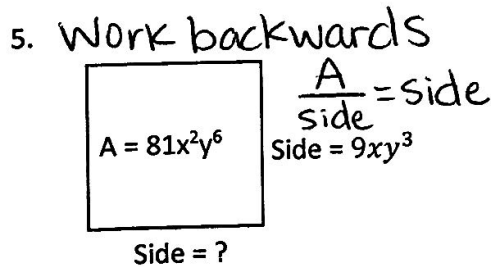
3. Find the volume.



4. Find the area.



Find the missing side(s), area or volume of each figure.



$\frac{81x^2y^6}{9xy^3} = 9xy^3$

