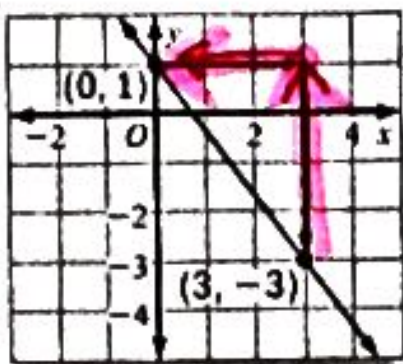


Homework: Slope

Slope of a Line

Directions: Calculate the slope of each line.

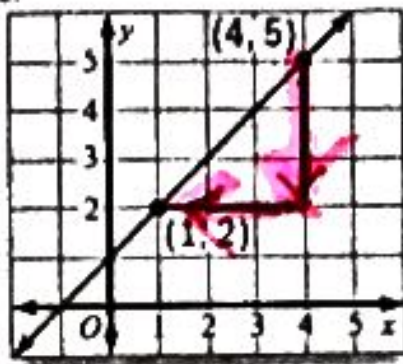
1.



$m = \frac{4}{-3}$

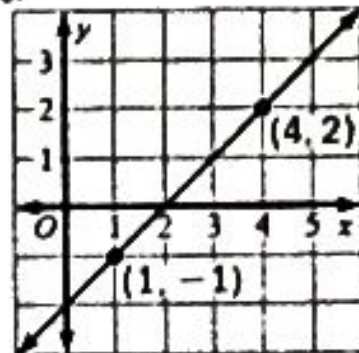
up 4
left 3

2.



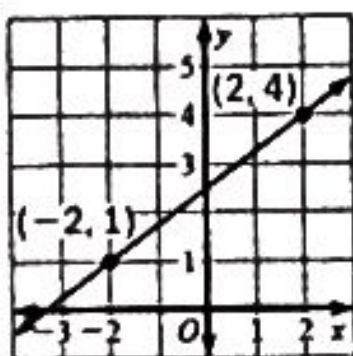
$m = \underline{\hspace{2cm}}$

3.



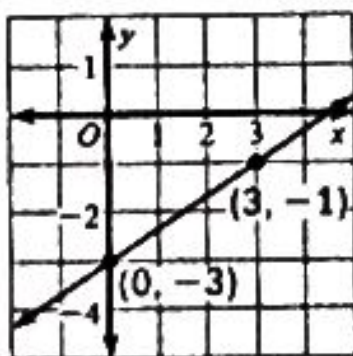
$m = \underline{\hspace{2cm}}$

4.



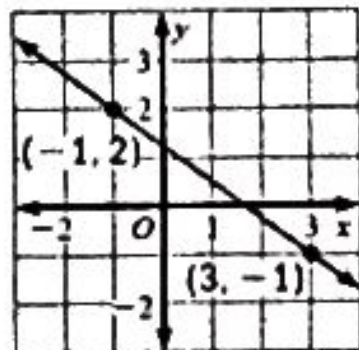
$m = \underline{\hspace{2cm}}$

5.



$m = \underline{\hspace{2cm}}$

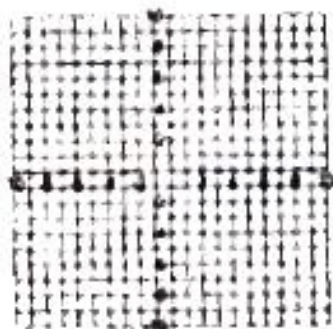
6.



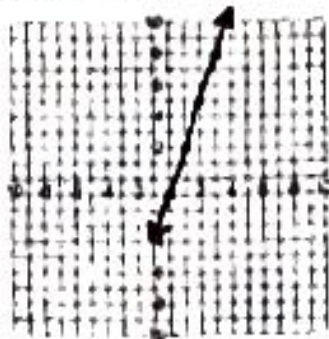
$m = \underline{\hspace{2cm}}$

Directions: Graph a line for each given point and slope. $\frac{\text{rise } 3}{\text{run } 1} = 3$

7. Slope = $-\frac{1}{2}$, point (5, 6)



8. Slope = 3, point (0, -1)



9. Slope = $-\frac{4}{3}$, point (2, 4)

