

Homework: Characteristics of Quadratic Functions

1. Define the following characteristics of the quadratic function $y = -x^2 - 4x$

Vertex: $(-2, 4)$ Minimum or Maximum? MAX

Axis of symmetry: _____

X-intercepts: _____

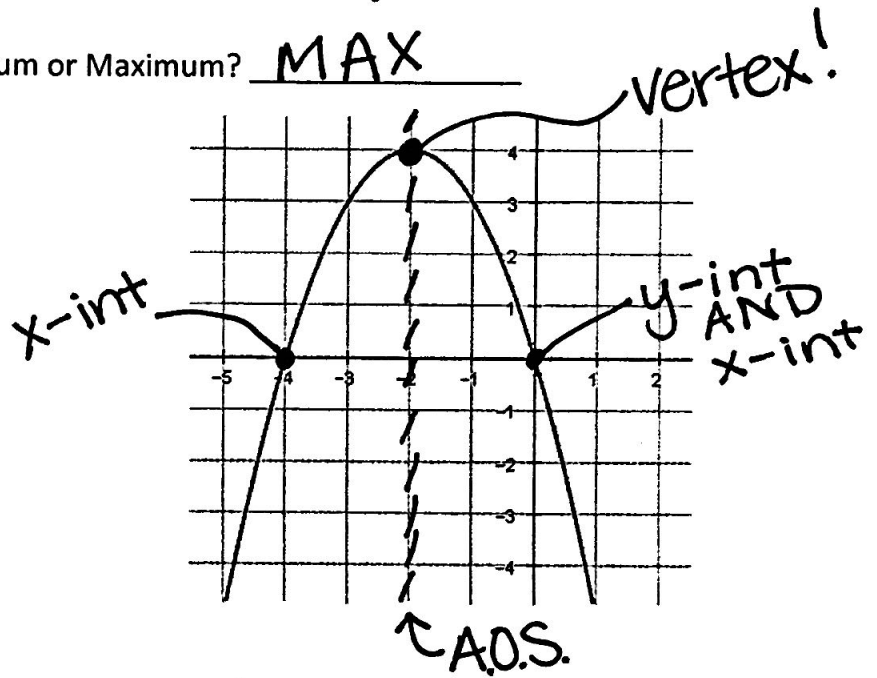
Y-intercept: _____

Increasing: _____

Decreasing: _____

Domain: _____

Range: _____



2. Define the following characteristics of the quadratic function $y = x^2 - 4x - 5$

Vertex: _____ Minimum or Maximum? _____

Axis of symmetry: _____

X-intercepts: _____

Y-intercept: _____

Increasing: _____

Decreasing: _____

Domain: _____

Range: _____

